

PV-ezRack SolarMatrix

The Universal Non-penetrating PV Mounting System

Cleenergy PV-ezRack SolarMatrix is a non-penetrating mounting system for commercial flat roof installations. It has been developed as a universal PV module mounting system suitable for tilt angles of 5 to 20 degree. The flexible and scalable design makes SolarMatrix your premium solution for flat roofs. Combining ballast and wind shield, Cleenergy PV-ezRack SolarMatrix reduces the load to the roof.



Specifications

Installation Site:	Flat roof
System Tilt Angle:	From 5 to 20 degree
Max. Building Height:	Up to 20m
Wind Load:	40m/s
Snow Load:	1.4kN/m ²
Applicable Module:	Framed
Module Orientation:	Landscape
Standards:	AS/NZS 1170
Rail Material:	Anodised aluminium
Bracket Material	Stainless steel
Warranty:	10 years*

Key Benefits

Easy Installation

Our patented and unique Z-module rail connectors eliminate the need for onsite cutting, making PV installation time and cost effective.

Non-Penetrating

Cleenergy combines the best designs of ballast and wind shield to avoid the need for penetrating the roof with fasteners.

Good Compatibility

Designed as a universal mounting system, PV-ezRack SolarMatrix is compatible with most of the major framed PV modules on the market.

High Quality

Strict quality control over materials and finished products ensure optimum strength and long life for your installation.

10 Year Warranty

Cleenergy provides a 10 year product warranty for your peace of mind.

Key Components



Matrix Rail

The patented Matrix rail is pre-cut to the correct size saving time on site.



Rail Connector

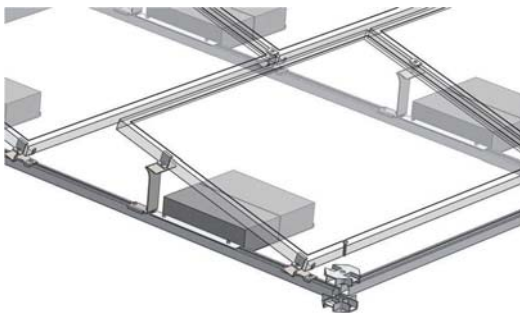
The new SolarMatrix elevated connection bracket will make your installation easy and allows water and debris to drain away.



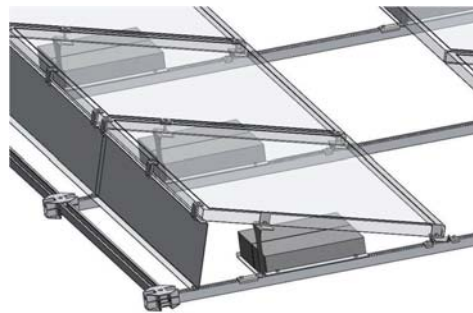
Tilt Brackets

Cleenergy SolarMatrix provides a choice of 6 tilt brackets to fit every projects' requirements.

Assembly Illustration



Position and connection of Front and Rear Legs, Clamps and Rail Cross Connectors.



Cleenergy SolarMatrix uses a combination of ballast and wind deflectors to secure the system to the roof.

Distributor Contact: